



SIKCOTM

automotive products limited

Gulzari Group

HIGH PRESSURE AUTOMATIC MOULDING LINE WITH
TWIN PRESS TECHNOLOGY

COMBINATION OF HORIZONTAL AND VERTICAL
MACHINING CENTERS

OFFERING COST EFFECTIVE, HIGH QUALITY
AND ADVANCE TECHNOLOGY DRIVEN
PRODUCTS



CYLINDER HEAD & BLOCK MANUFACTURER

Putting you on the road to reliability

india

MADE IN INDIA

“Great things happen to those who don't stop believing, trying, learning, and being grateful.”

Gulzari

Sh. Gulzari Lal Sethi

www.gulzarigroup.com



His VisionPinnacle in his niche, the founder of Gulzari group Mr. Indereshwar Sethi, enlightens us at every little step and hence today we are empowering others to achieve their goals. Our substratum ethics are to be fair and honest to both our employees and our clients. Hence we are the largest group in the market. With the best of our knowledge, we have put our strength in the making of this legacy. "Don't just dream, do every little bit to fulfil it.." is what drives us to deliver the best to our clients.

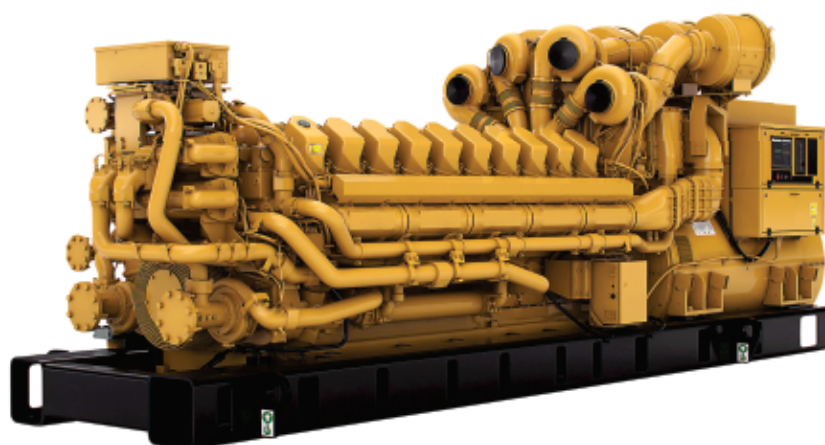


SIKCO is one of the renowned leading cylinder heads Manufacturer by revenue, established in 1984. We manufacture and distribute a wide range of high-quality cast iron SG25 grade **ENGINE CYLINDER HEAD**. Our industrial base is built over more than 36 years of experience in creating the evolution of Automotive, Agricultural & Industrial, OEM / After-Market Spare Parts which include **Heavy locomotives, commercial trucks, tractors, and 2-3 wheeler vehicles**.. From innovative design to precision manufacturing...SIKCO is earnest about quality and workmanship at every step of the process.

COMPETITIVE ADVANTAGES



PART IDENTIFICATION	OEM PART NO.	ENGINE NO.	CASTING WT. KGS
U-2932-6 BORE	8N 1187	3306 PC	117
U-4873-4 BORE	8N 1188	3304 PC	73
U-5073-6 BORE	1P 4303	3306 PC	117
U-5072-4 BORE	1N 4304	3304 PC	70
U-5075-4 BORE	1558004	3304 DI	77
U-5076-6 BORE	8N 6796	3306 DI	117
U-6415-11626-6 BORE	110-5096	3406 PC	185
U-6423-11625-6 BORE	110-5097	3406 DI	185



Replacement part for: **MASSEY FERGUSON AD.3.152**

PART IDENTIFICATION	ENGINE SPECIFICATIONS		PART SPECIFICATION						
	ENGINE NO.	TYPE	NO.OF CYL	DIMENSIONS IN MM			WEIGHT IN KGS	MATERIAL	TYPE
				L	B	H			
JCB 02130060 TAFE	JCB AD3.152 406	DI	3	357.2	204.8	76.2	20 Kgs Approx.	FG 260/ CI GRADE 25	IN LINE
LEYLAND MARSHALL AHM2215	LANDINI PERKINS AD3.152 5500								
MASSEY FERGUSON 4222810M91 ,3637389R91 MF - 135	LANDINI Perkins Engine - AD3.152 C4500, C4830, C5830								
PERKINS ZZ80082	PERKINS AD3.152 245,253,50 2								
MASSEY FERGUSON 737704M91 740595M91 ; PERKINS A5BD1969,A5BD2722,ZZ80025 , 68128, 86550, 89141, 86609	Massey Ferguson Perkins Engine - AD3.152 135, 148, 230, 240, 250, 254, 254S, 255, 340, 342, 350, 353, 550 Perkins ; Engine - AD3.152 40, 20B, 20D, 20E, 20F, 30E, 30H								



Replacement part for: **Perkins A3.152₃₅**

PART IDENTIFICATION	ENGINE SPECIFICATIONS		PART SPECIFICATION						
	ENGINE NO.	TYPE	NO.OF CYL	DIMENSIONS IN MM			WEIGHT IN KGS	MATERIAL	TYPE
				L	B	H			
MASSEY FERGUSON 3638321M91	F3.144 Dexta	PC	3	357.2	204.8	76.2	18.8 Kgs Approx.	FG 260 /CI GRADE 25	IN LINE
PERKINS ZZ80048	A3.152 35								
MASSEY FERGUSON ZZ80058 68131,U5BD0024,73178 1M91,3637784M91	F3.152 Super Dexta								
PERKINS 68131,U5BD0024,ZZ800 58,86553,58462,82620	Ford New Holland								



Replacement part for: **Ford / New Holland Tractor**

PART IDENTIFICATION	ENGINE SPECIFICATIONS		PART SPECIFICATION						
	ENGINE NO.	TYPE	NO.OF CYL	DIMENSIONS IN MM			WEIGHT IN KGS	MATERIAL	TYPE
OEM PART NO.				L	B	H			
CASE NEW HOLLAND 87802183 FORD FINIS 87802183		DI	3	465	227	114	33.5 KGS. APPROX.	FG 260/ CI GRADE 25	IN LINE
FORD FINIS 84135227 CASE NEW HOLLAND 84135227		DI	4	595.5	226.7	92.7	45 KGS. APPROX.	FG 260/ CI GRADE 25	IN LINE



Replacement part for: **P3 IMT - 533 / 539**

PART IDENTIFICATION	ENGINE SPECIFICATIONS		PART SPECIFICATION						
	ENGINE NO.	TYPE	NO.OF CYL	DIMENSIONS IN MM			WEIGHT IN KGS	MATERIAL	TYPE
OEM PART NO.				L	B	H			
P-3	IMT-539	PC	3	357.2	204.8	91	19 KGS. APPROX.	FG 260/ CI GRADE 25	IN LINE

PART IDENTIFICATION	ENGINE SPECIFICATIONS		PART SPECIFICATION						
	ENGINE NO.	TYPE	NO.OF CYL	DIMENSIONS IN MM			WEIGHT IN KGS	MATERIAL	TYPE
OEM PART NO.				L	B	H			
P-3	IMT -533 ZZ 80048	PC	3	357.2	204.8	91	19 KGS. APPROX.	FG 260/ CI GRADE 25	IN LINE



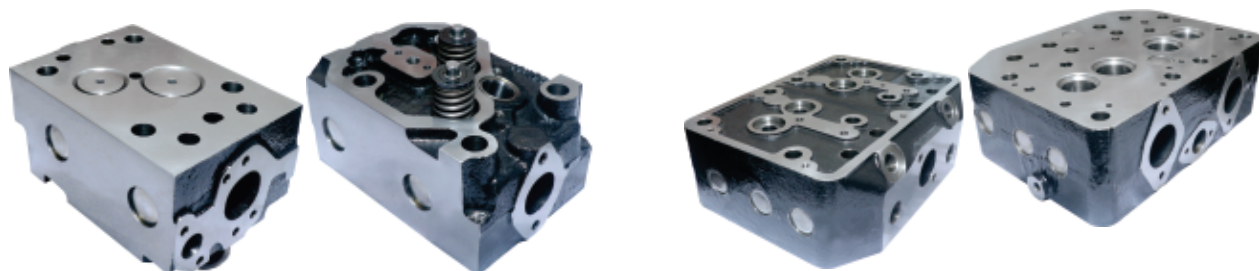
Replacement part for: **International Harvester B-275 / D 434**

PART IDENTIFICATION	ENGINE SPECIFICATIONS		PART SPECIFICATION						
	ENGINE NO.	TYPE	NO.OF CYL	DIMENSIONS IN MM			WEIGHT IN KGS	MATERIAL	TYPE
OEM PART NO.				L	B	H			
3044489 3044490	B 275 D 434	PC	4	487	236	119	32 KGS. APPROX.	FG 260/ CI GRADE 25	IN LINE



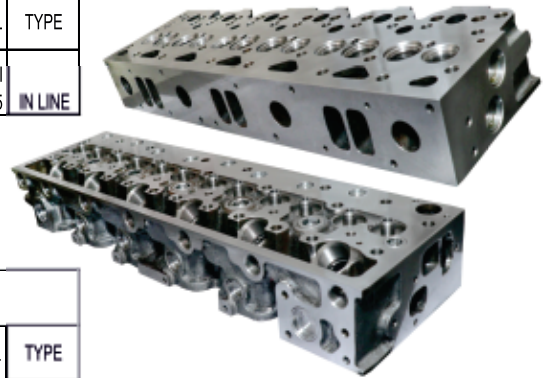
Replacement part for: **Zetor C-360 / Ursus C-330**

PART IDENTIFICATION	ENGINE SPECIFICATIONS		PART SPECIFICATION						
	ENGINE NO.	TYPE	NO.OF CYL	DIMENSIONS IN MM			WEIGHT IN KGS	MATERIAL	TYPE
OEM PART NO.				L	B	H			
46.50534.0	C-360	DI	1	197	133	104 (95+9)	10.5 APPROX.	FG 260/ CI GRADE 25	IN LINE
4901.554	ZETOR								
7101.0501	ZETOR								
5501.0501	ZETOR								
42.02205.0	C 330	PC	2	277	210	95.5	20	FG 260/ CI GRADE 25	IN LINE



Replacement part for: **Mercedes OM 366 / 352**

PART IDENTIFICATION		ENGINE SPECIFICATIONS		PART SPECIFICATION					
OEM PART NO.	ENGINE NO.	TYPE	NO.OF CYL	DIMENSIONS IN MM			WEIGHT IN KGS	MATERIAL	TYPE
				L	B	H			
366 010 1720 366 010 1620	OM 366	DI	6	696	195	92	42 KGS. APPROX.	FG 260/ CI GRADE 25	IN LINE
366 010 2920 366 010 6620	OM 366 A/LA								
366 010 6820	OM 366 A/LA								

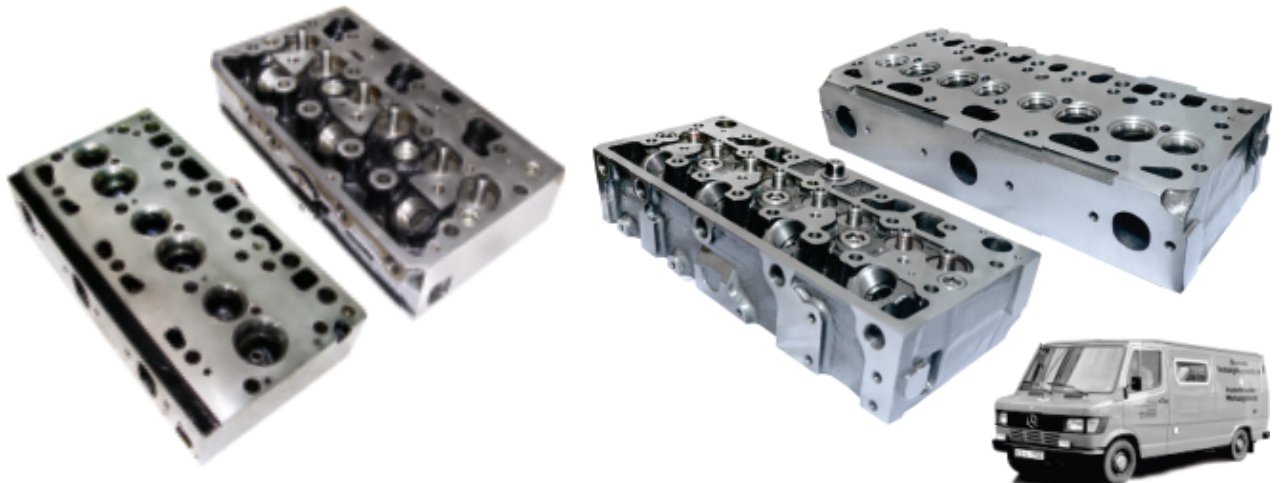


PART IDENTIFICATION		ENGINE SPECIFICATIONS		PART SPECIFICATION					
OEM PART NO.	ENGINE NO.	TYPE	NO.OF CYL	DIMENSIONS IN MM			WEIGHT IN KGS	MATERIAL	TYPE
				L	B	H			
312 010 3020	OM 312	DI	6	696	195	92	44 KGS. APPROX.	FG 260/ CI GRADE 25	IN LINE
321 010 1520 321 010 1620	OM 321	DI	6	696	195	92	44 KGS. APPROX.	FG 260/ CI GRADE 25	IN LINE
352 010 5020 352 010 5220	OM 352 OM 353	DI	6	696	195	92	44 KGS. APPROX.	FG 260/ CI GRADE 25	IN LINE
352 010 2021 352 010 0221	OM 352 OM 353	DI	6	696	195	92	44 KGS. APPROX.	FG 260/ CI GRADE 25	IN LINE
352 010 2221	OM 352 A								



Replacement part for: **Mercedes OM-314 / 360**

PART IDENTIFICATION		ENGINE SPECIFICATIONS		PART SPECIFICATION					
OEM PART NO.	ENGINE NO.	TYPE	NO.OF CYL	DIMENSIONS IN MM			WEIGHT IN KGS	MATERIAL	TYPE
				L	B	H			
314 010 5620 314 010 3320	OM 314	DI	4	469	195	92	30.5 KGS. APPROX.	FG 260/ CI GRADE 25	IN LINE
360 010 1520	OM 360	DI	3	423	233	96	32KGS (APPROX.)	FG 260/ CI GRADE 25	IN LINE



Replacement part for: **Mercedes OM-355 / 442**



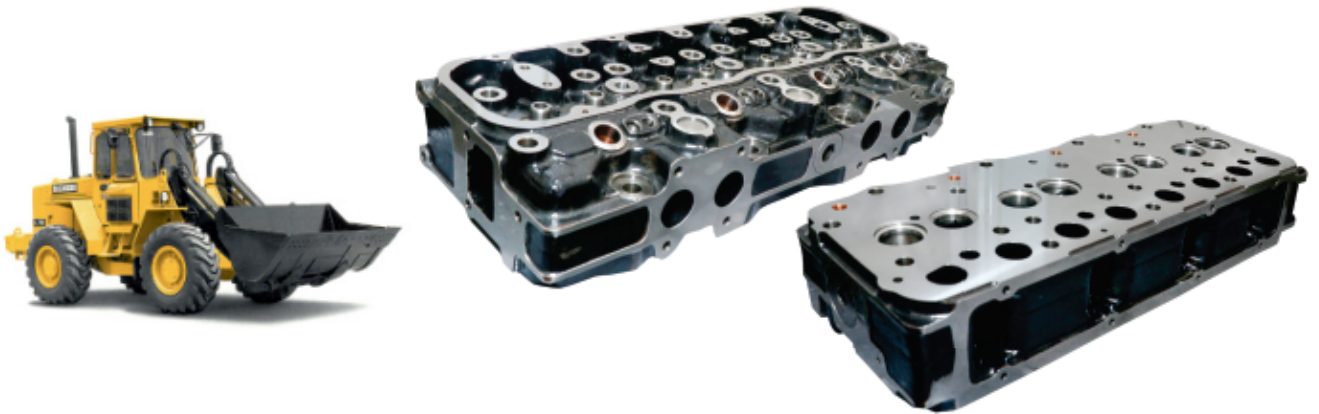
PART IDENTIFICATION	ENGINE SPECIFICATIONS		PART SPECIFICATION						
	OEM PART NO.	ENGINE NO.	TYPE	NO.OF CYL	DIMENSIONS IN MM			WEIGHT IN KGS	MATERIAL
				L	B	H			
355 010 0220	OM 346	DI	1	290	164	130	14 KGS. APPROX.	FG 260/ CI GRADE 25	IN LINE
355 010 0820	OM 355 / A								
442 010 0620	OM 441/442 A/LA	DI	1	220	157	114	12.5 APPROX.	FG 260/ CI GRADE 25	IN LINE

Replacement part for: **OM 457 / ACTROS**

PART IDENTIFICATION	ENGINE SPECIFICATIONS		PART SPECIFICATION						
	OEM PART NO.	ENGINE NO.	TYPE	NO.OF CYL	DIMENSIONS IN MM			WEIGHT IN KGS	MATERIAL
				L	B	H			
OM 457-010.4520	OM 457	DI	1	237	171	114	20 APPROX.	FG 260/ CI GRADE 25	IN LINE
OM 460-010.1820 OM 460-010.0620	OM 460								
OM 541-010-6420	OM 501 / ACTROS	DI	1	237	171	114		FG 260/ CI GRADE 25	IN LINE



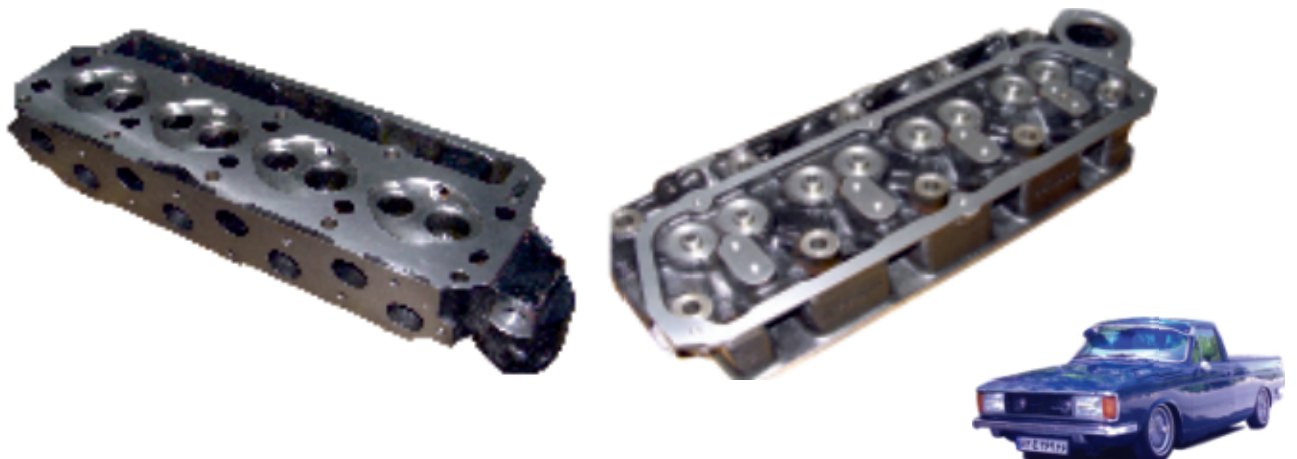
Replacement part for: **Volvo Construction Equipment**



PART IDENTIFICATION	ENGINE SPECIFICATIONS		PART SPECIFICATION							
	OEM PART NO.	ENGINE NO.	TYPE	NO.OF CYL	DIMENSIONS IN MM			WEIGHT IN KGS	MATERIAL	TYPE
					L	B	H			
D45,D45B,TD45,TD45B,TD45KBE,TD45KCE,4300,616B/646,4200B,6300,4300B,L50,L70,EL70 BM	4804708-8 ; 4804467-1	DI	4	574	224.5	151 (109+42)	41 APPROX.	FG 260/ CI GRADE 25	IN LINE	
MARINE & INDUSTRIAL APPLICATION : D45BPP,TD45B										
D42,TD42	4804182-6	DI	4	574	224.5	151 (109+42)	41 APPROX.	FG 260/ CI GRADE 25	IN LINE	

Replacement part for: **Peykan Passenger Car**

PART IDENTIFICATION	ENGINE SPECIFICATIONS		PART SPECIFICATION							
	OEM PART NO.	ENGINE NO.	TYPE	NO.OF CYL	DIMENSIONS IN MM			WEIGHT IN KGS	MATERIAL	TYPE
					L	B	H			
		1.6 L	SI	4	505.3	164.5	83	17 APPROX.	FG 260/ CI GRADE 25	IN LINE



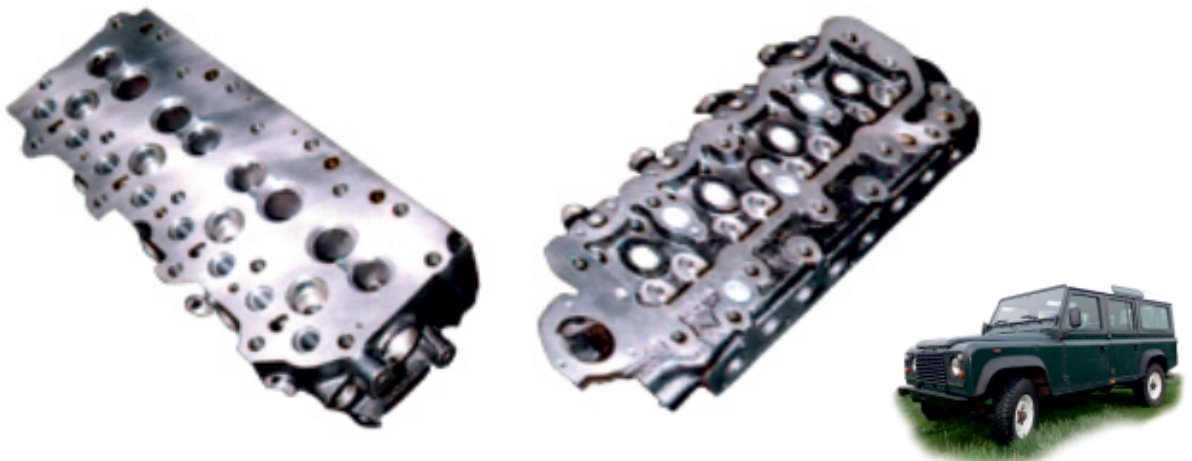
Replacement part for: **Iveco Engine**



PART IDENTIFICATION	ENGINE SPECIFICATIONS		PART SPECIFICATION							
	OEM PART NO.	ENGINE NO.	TYPE	NO.OF	DIMENSIONS IN MM			WEIGHT IN KGS	MATERIAL	TYPE
				CYL	L	B	H			
50NC-65.9-85.12-120.14-M29, 99452262, 99452269, 99452265,			DI	4	525.5	206.2	92.7	36 APPROX.	FG 260/ CI GRADE 25	IN LINE
330-36HT	500330966 / 500330967		DI	3	512	268	140	62 APPROX.	FG 260/ CI GRADE 25	IN LINE

Replacement part for: **Landrover 2.5 Diesel**

PART IDENTIFICATION	ENGINE SPECIFICATIONS		PART SPECIFICATION							
	OEM PART NO.	ENGINE NO.	TYPE	NO.OF	DIMENSIONS IN MM			WEIGHT IN KGS	MATERIAL	TYPE
				CYL	L	B	H			
STC 803 909030	2.5 L DIESEL	DI	4	580	198	95	31 KGS. APPROX.	FG 260/ CI GRADE 25	IN LINE	
759521 / L219 R7										



PACKING





**B-153 PHASE-1 INDUSTRIAL AREA
MAYAPURI NEW DELHI-110064**



cylinderhead@sikco.com



+ 91-11- 28115570 (100 LINES)



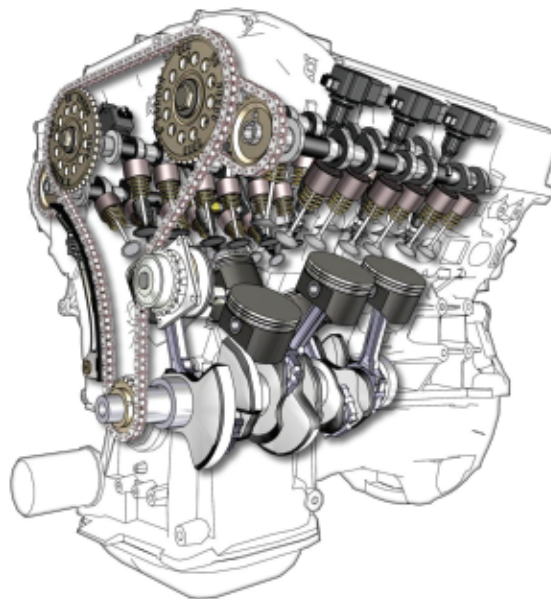
+ 91 98 101 9 4848



**E118 RIICO IND AREA, KAHRANI BHIWADI,
RAJASTHAN, ZIP CODE: 301018**



www.sikco.com



Important Instructions

All description of statistic pertaining to engine, auto manufacturer available in our product catalogue are for reference only and we do not claim to be the original equipment manufacturer for them. However we bear no prejudice towards the OEM's. Though the information collated by us has been carefully complied, however we accept no claim / liability for any omission etc. All original names, logo, descriptions and numbers of spare parts, engines, vehicles manufacturers etc. mentioned in this catalogue are only for internal reference and comparison. They are not designation of origin and must not be used towards vehicle owners. The only valid numbers for commercialization of our products are the ones started by

"Sikco Automotive Products Limited ". The information has been carefully compiled. However, we accept no responsibility for it and claims for damages on this information will not be recognized. Dimensions mentioned are overall in nature and weight considered is gross. Products for spare parts.